



ARCHITECTURE PORTFOLIO

Irmeen Wani

Address: Wani House, Shiraz road,
Khanyar, Srinagar, J & K - 190003
Phone: +91 7006908720
Email : irmeen.w@gmail.com

120'
Wide Road

Legend

- 01) Entrance Gate
- 02) Security Cabin
- 03) Children School Van Waiting
- 04) Water Body
- 05) Aroma Garden
- 06) Department Store
- 07) Garden View Seating
- 08) Jogging Track
- 09) Jain Derasar + Upashray
- 10) Senior Citizen Garden
- 11) Lawn
- 12) Skating Rink
- 13) Acupressure Garden
- 14) Net Cricket Pitch
- 15) Mini-Golf
- 16) Lawn Tennis Court
- 17) Pavilion / Gazebo
- 18) Musical Fountain
- 19) Cycling Track
- 20) Basketball Court
- 21) Volleyball Court
- 22) Hindu Temple
- 23) Life Size Chess
- 24) Human Scale ludo
- 25) Amphitheater
- 26) Dais
- 27) Kids adventure Area
- 28) Rock Climbing
- 29) Life Size Piano
- 30) Children Play Area
- 31) Ramp For Cellar
- 32) Parking
- 33) Kinder Garden
- 34) Swimming Pool (Kids & Adult)



HAPPY EXCELLENCIA, SURAT

(LUXURY RESIDENTIAL)

MASTER PLAN

U - Type



3D RENDER OF BUILDING TYPE 'U'

Happy Excellencia is a residential project which is an exceptional combination of residences. Each storey is well planned with all the unparalleled amenities such as children play area, sports club, lavishing banquet hall with luminous stage, musical disco theque, conference room, beauty salon, gymnasium, theatre, library, nursery, play station, swimming pools and much more.

HAPPY EXCELLENCIA, SURAT



UNIVERSAL Section view U1

3D VIEW OF A TYPICAL FLAT IN BUILDING TYPE 'U'

The spacious interiors gives you a visual grace as the large glazed windows bring in view of mesmerizing natural landscape outside. Every building has 2 flats per floor. This type 'U' building includes the following spaces: Lobby, Entrance Foyer, Living room, Deck, Dining, Pooja, Kitchen, Store, Wash, 5 Bedrooms with attached toilets, Home theatre, Gym, Sauna, Steam, Changing Room and Jacuzzi.

(LUXURY RESIDENTIAL)

BUILDING TYPE 'U'

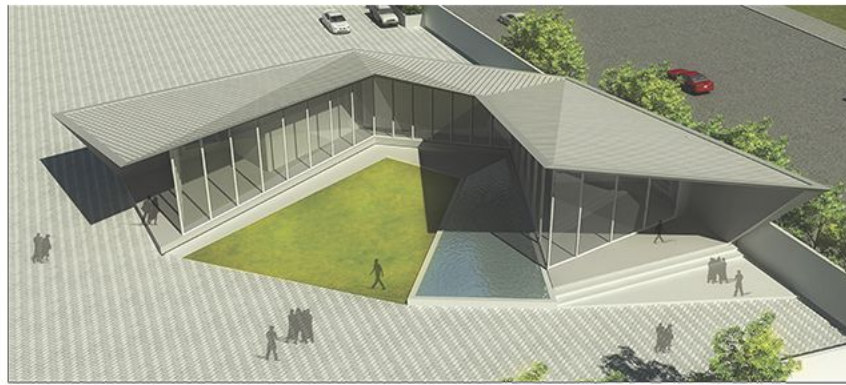


HAPPY EXCELLENCIA, SURAT (LUXURY RESIDENTIAL)

SITE VIEWS



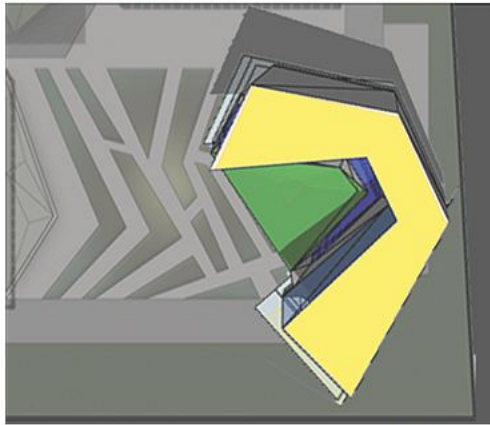
CONTEXT



CONCEPTUAL VIEW 1



CONCEPTUAL VIEW 2



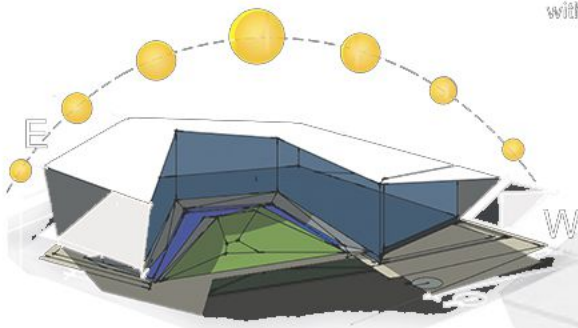
SITE PLAN



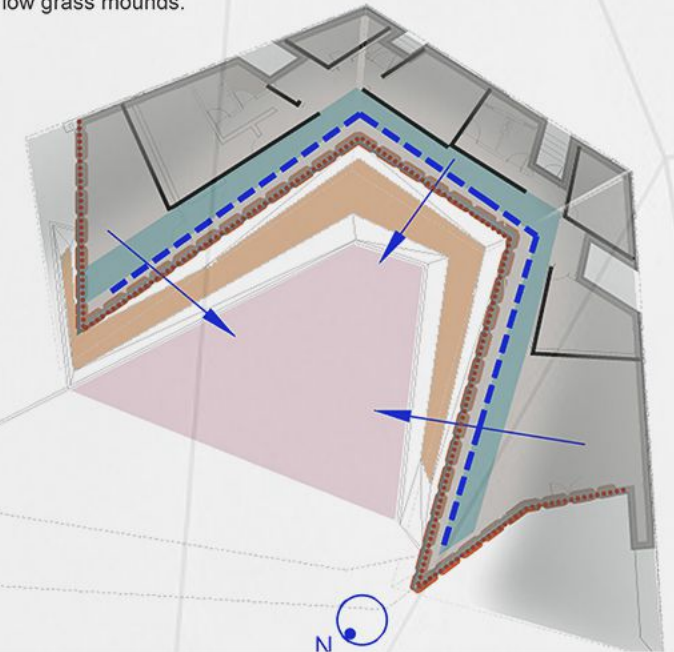
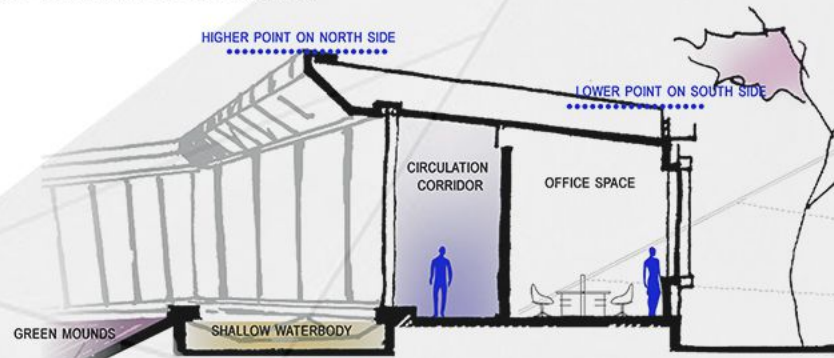
A series of linear trapezoidal volumes skirt the southern periphery of a site located in Surat in India forming an open court facing the north. Housing a development sales office this ground floor building opens all the internal spaces towards the focal landscaped court created between the enclosed volumes. The office spaces oriented towards the court by their layout echo this focus sectionally too with higher heights fronting the north side and the courtyard becoming lower on the south and the periphery. Designed in response to the client's functional needs and the extreme summer climate of its location, the entire office is north oriented to derive indirect light and reduce the heat gain into the building with glass fronting the northern sides and the courtyard while the southern side is solid constituted of galvalume coated sheets with insulation and minimal openings. The support mullions for the glazing along the courtyard carry the weight of the roof structure making the entire roof appear as a floating cantilevered canopy opening the internal spaces to the landscaped court. Angular mounds of grass echo the built form creating a shallow reflecting pool along the uninterrupted glazed front of the office spaces. The circulation spine skirts this open threshold between the exterior and the interior allowing one to traverse along the landscaped space whilst moving within the office. The building whilst being a single level structure creates a sculptural presence that is designed in response to the climate of its location, creating indoor spaces that integrate with the external landscaped garden.

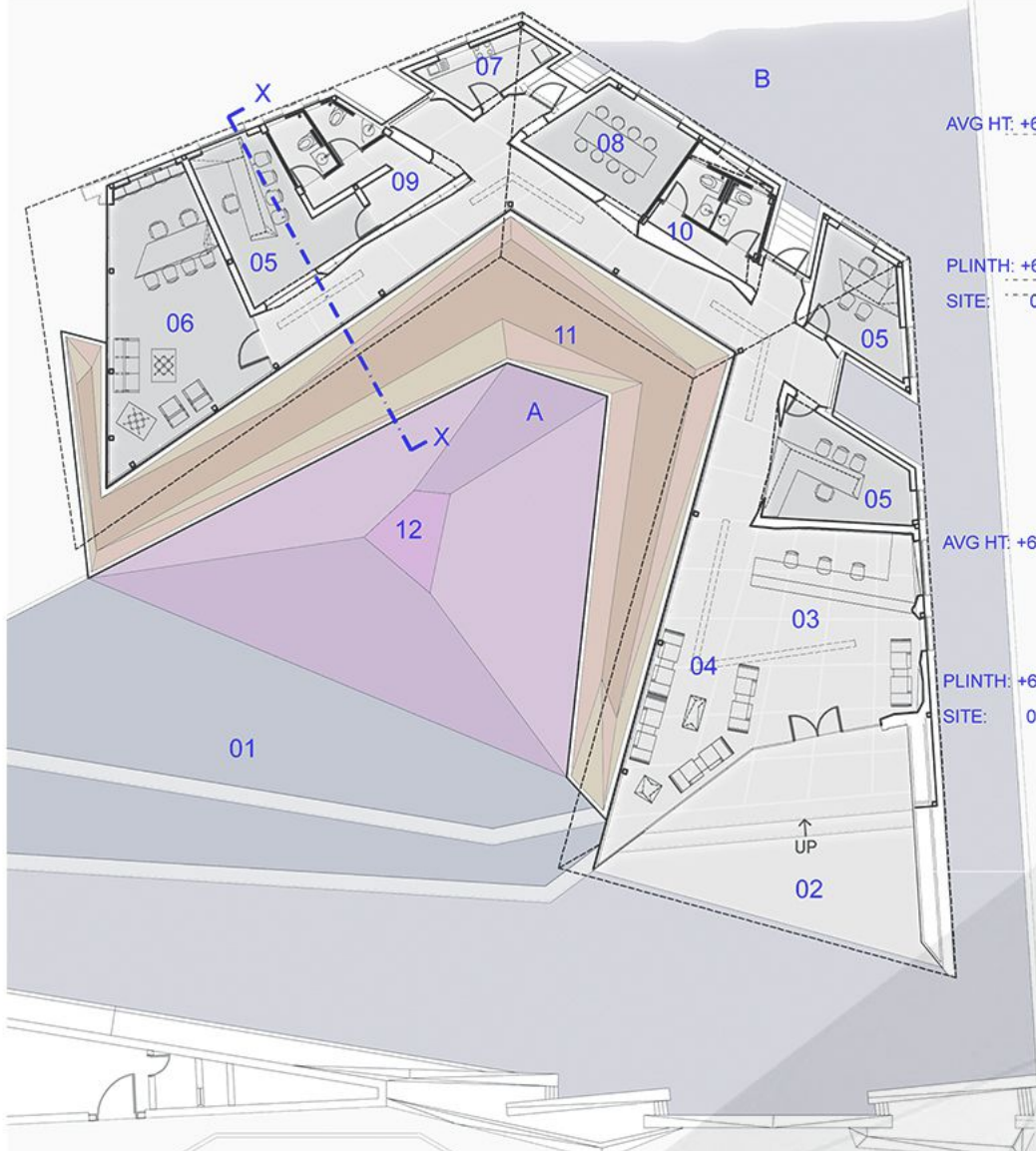


Folding around a central courtyard, the abstract folds of the metal sheet rise from low grass mounds.



SUN PATH DIAGRAM





PLAN

- 1. ENTRANCE PLAZA
- 2. ENTRANCE FOYER
- 3. RECEPTION
- 4. WAITING
- 5. SALES OFFICE
- 6. DIRECTORS CABIN
- 7. PANTRY
- 8. LUNCH ROOM
- 9. STAFF TOILETS
- 10. GUEST TOILETS
- 11. WATERBODY
- 12. LANDSCAPED COURT

AVG HT: +6.50M

PLINTH: +6.50M

SITE: 0.00M

AVG HT: +6.50M

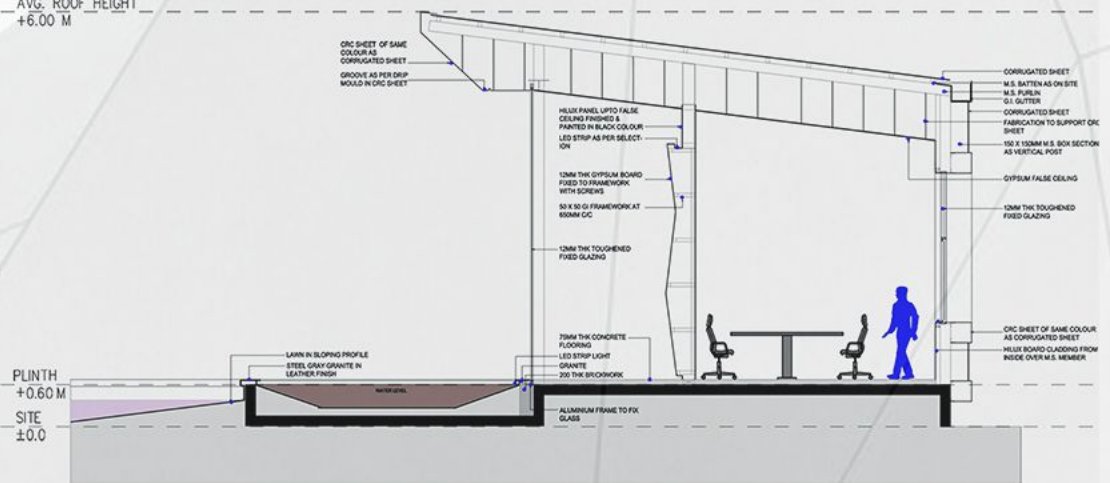
PLINTH: +6.50M

SITE: 0.00M

AVG. ROOF HEIGHT
+6.00 M

PLINTH
+0.60 M

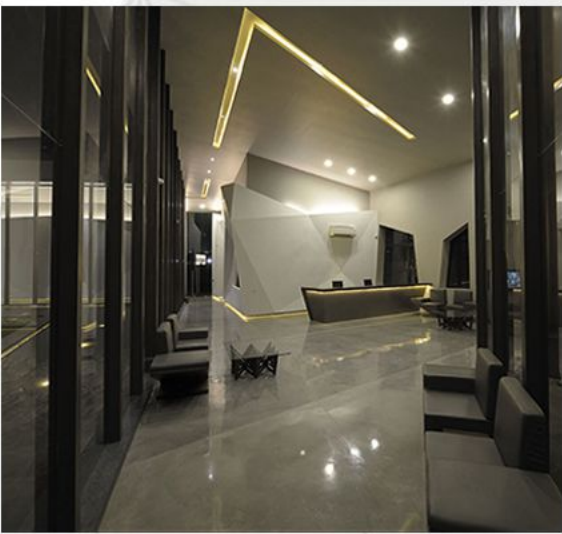
SITE
±0.0



ELEVATION A

ELEVATION B

SECTION



HAPPY EXCELLENCIA, SURAT

(SITE OFFICE)

FINISHED VIEWS



TOTAL PLOT AREA = 21391.6 sqm = 230259.18 sft

Basement for building services and parking	=7894.8 sqm
Ground Floor	
Hotel –	
1) Banquet + kitchen + toilets	=1469.7 sqm
2) Reception + foyer + lobby + passage area	=737.2 sqm
3) All day dining + kitchen	=643.9 sqm
4) Service cores and other service areas	=408.2 sqm
Mall –	
1) Shops (34 nos. + 1 Anchor)	=1687.8 sqm
2) Service cores and other areas	=408.1 sqm
3) Toilets	=56.93 sqm
4) Courtyard	=1672.25 sqm

First Floor	
Hotel	=3065.6 sqm
Mall	=3668.21 sqm
Second floor	
Hotel	=6244.22 sqm
Third, fourth, fifth(provisional) floors	(area each floor)
Hotel	=8411.26 sqm
Terrace used for building services	=4906.1 sqm
RESIDENTIAL	
Ground, first, second floor (14 rooms each floor)	=1103 (area each floor)sqm
Terrace used for building services	=1103 sqm



FIRST FLOOR

FIRST FLOOR PLAN



SECOND FLOOR

SECOND FLOOR PLAN

NO. OF ROOMS - 67



THIRD FLOOR

THIRD FLOOR PLAN

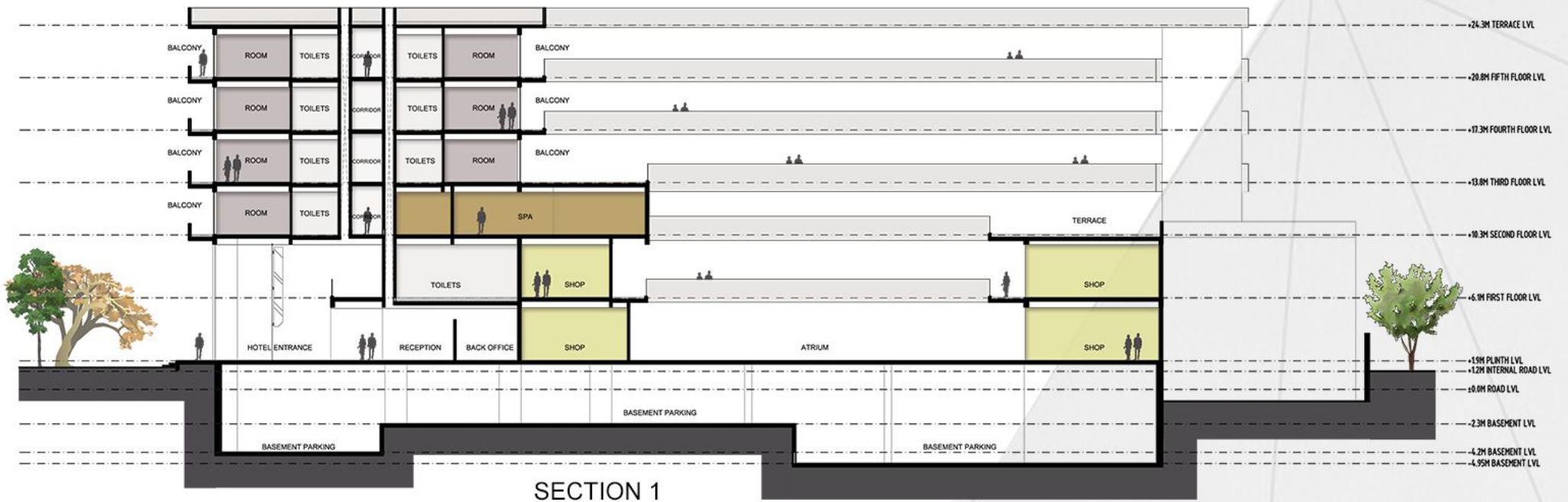
NO. OF ROOMS - 73



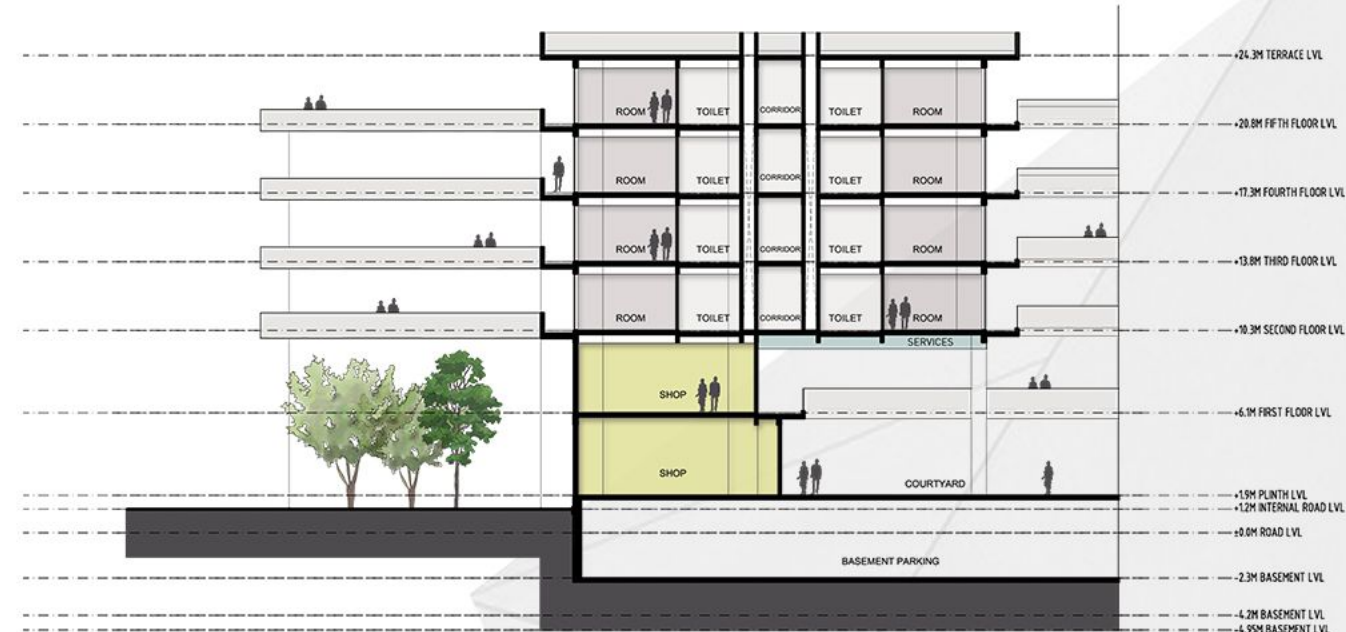
FOURTH / FIFTH FLOOR

FOURTH FLOOR PLAN

NO. OF ROOMS - 73



SECTION 1



SECTION 2



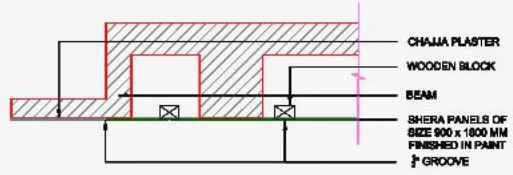
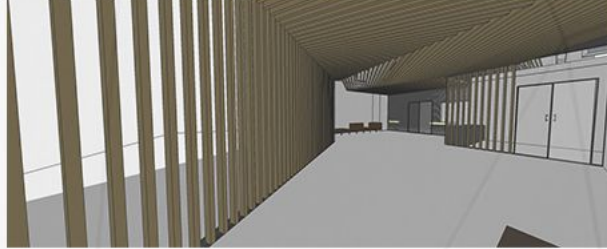
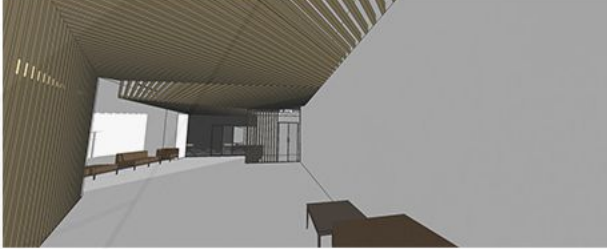
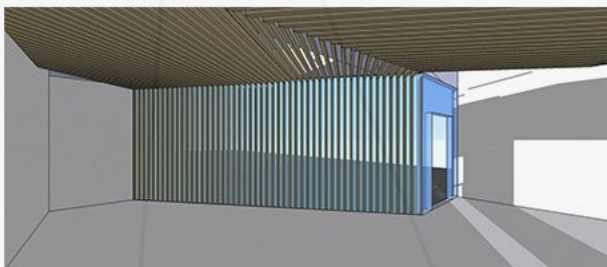
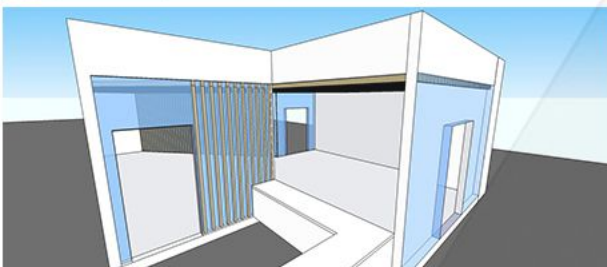
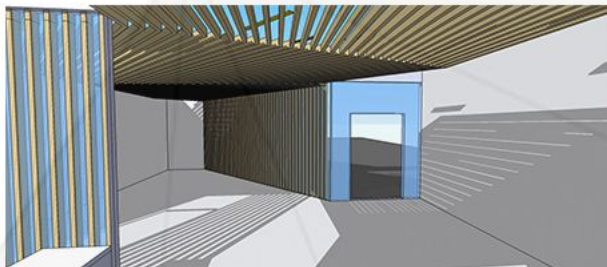
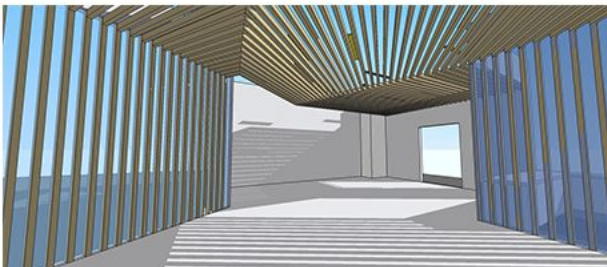
KEY PLAN



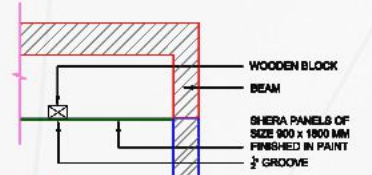
CENTRAL PARK, MUMBAI

ENTRANCE LOBBY FOR RESIDENTIAL COMPLEX

SITE PLAN



DETAIL A
CHAJJA END DETAIL



DETAIL B
BEAM END DETAIL

